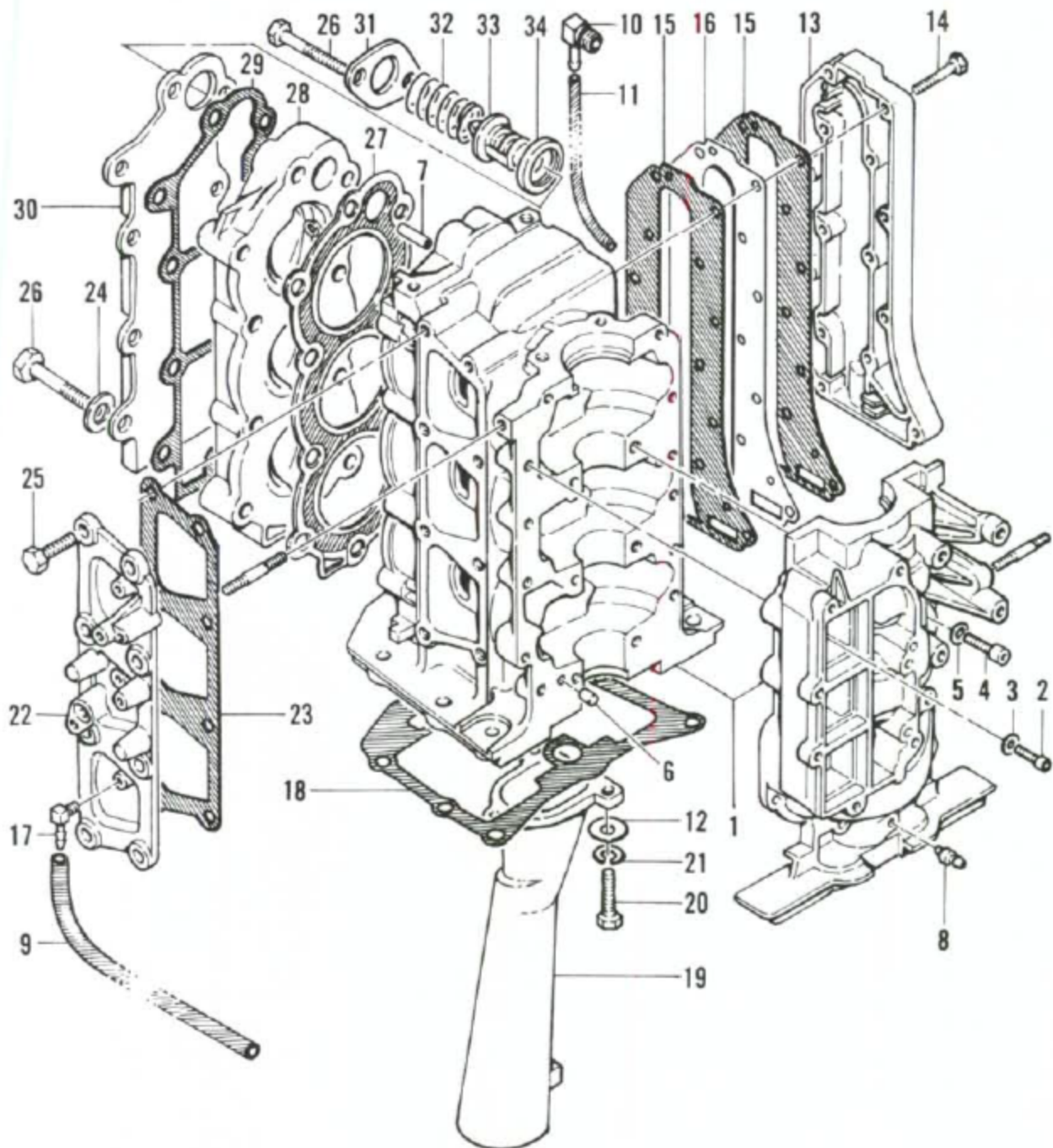


## POWER HEAD (25 HP 3-CYLINDER)



- |  |                                      |                         |
|--|--------------------------------------|-------------------------|
| 1. Cylinder block and crankcase cover assembly | 11. Tube (tell-tale water discharge) | 23. Gasket              |
| 2. Crankcase cover outer screws                | 12. Flat washer                      | 24. Washer              |
| 3. Washer                                      | 13. Exhaust cover                    | 25. Screw               |
| 4. Main bearing screws                         | 14. Screw                            | 26. Screw               |
| 5. Washer                                      | 15. Gasket                           | 27. Gasket              |
| 6. Dowel pin                                   | 16. Inner exhaust plate              | 28. Cylinder head       |
| 7. Water deflector                             | 17. Elbow, recirculation             | 29. Gasket              |
| 8. Check valve (recirculation)                 | 18. Gasket                           | 30. Cylinder head cover |
| 9. Hose (recirculation)                        | 19. Exhaust Tube                     | 31. Thermostat cover    |
| 10. Elbow (tell-tale water discharge)          | 20. Screw                            | 32. Thermostat spring   |
|  | 21. Lockwasher                       | 33. Thermostat          |
|  | 22. Transfer port cover              | 34. Grommet             |