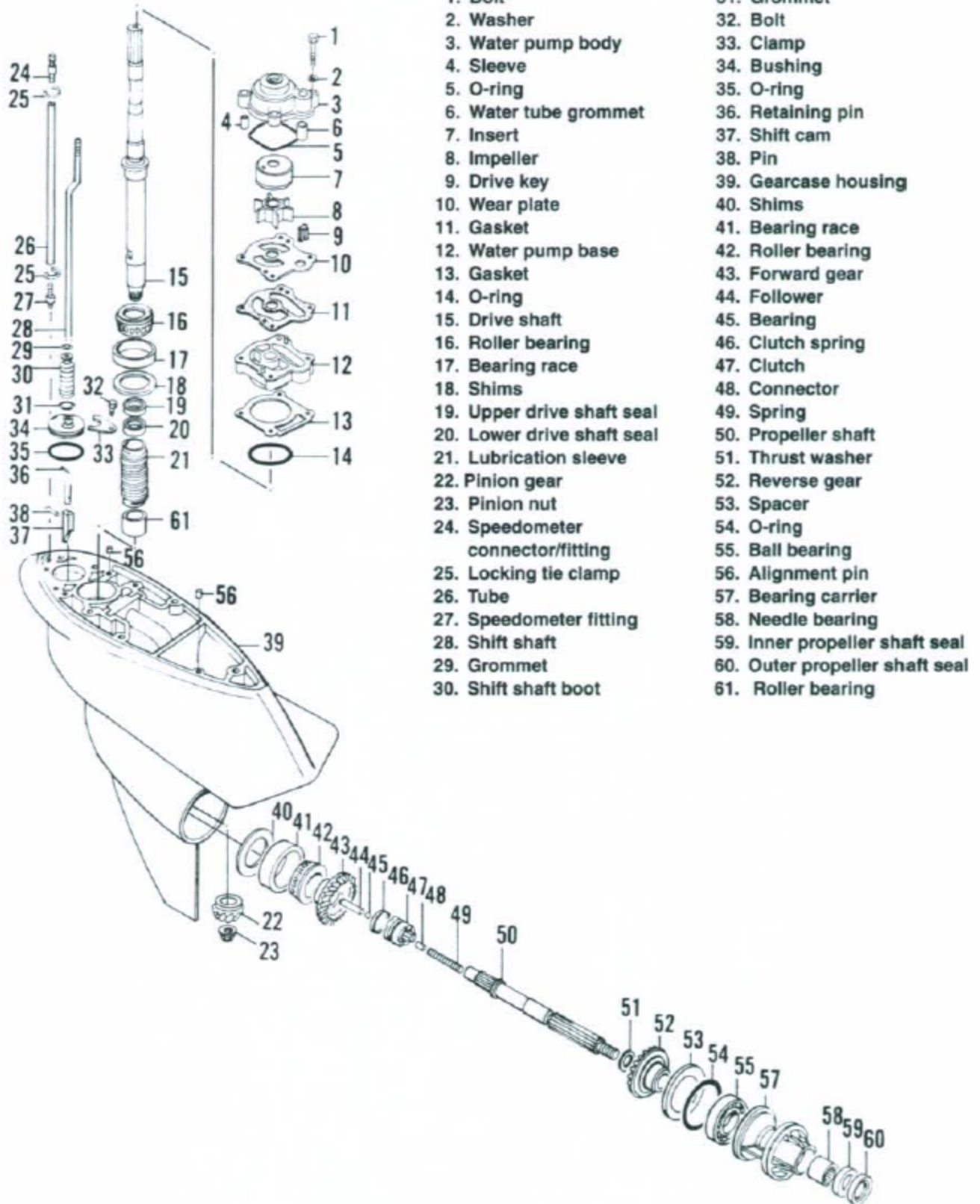


## GEARCASE COMPONENTS (MODELS BF35A, BF40A, BF45A AND BF50A)



- |                                   |                                |
|-----------------------------------|--------------------------------|
| 1. Bolt                           | 31. Grommet                    |
| 2. Washer                         | 32. Bolt                       |
| 3. Water pump body                | 33. Clamp                      |
| 4. Sleeve                         | 34. Bushing                    |
| 5. O-ring                         | 35. O-ring                     |
| 6. Water tube grommet             | 36. Retaining pin              |
| 7. Insert                         | 37. Shift cam                  |
| 8. Impeller                       | 38. Pin                        |
| 9. Drive key                      | 39. Gearcase housing           |
| 10. Wear plate                    | 40. Shims                      |
| 11. Gasket                        | 41. Bearing race               |
| 12. Water pump base               | 42. Roller bearing             |
| 13. Gasket                        | 43. Forward gear               |
| 14. O-ring                        | 44. Follower                   |
| 15. Drive shaft                   | 45. Bearing                    |
| 16. Roller bearing                | 46. Clutch spring              |
| 17. Bearing race                  | 47. Clutch                     |
| 18. Shims                         | 48. Connector                  |
| 19. Upper drive shaft seal        | 49. Spring                     |
| 20. Lower drive shaft seal        | 50. Propeller shaft            |
| 21. Lubrication sleeve            | 51. Thrust washer              |
| 22. Pinion gear                   | 52. Reverse gear               |
| 23. Pinion nut                    | 53. Spacer                     |
| 24. Speedometer connector/fitting | 54. O-ring                     |
| 25. Locking tie clamp             | 55. Ball bearing               |
| 26. Tube                          | 56. Alignment pin              |
| 27. Speedometer fitting           | 57. Bearing carrier            |
| 28. Shift shaft                   | 58. Needle bearing             |
| 29. Grommet                       | 59. Inner propeller shaft seal |
| 30. Shift shaft boot              | 60. Outer propeller shaft seal |
|                                   | 61. Roller bearing             |