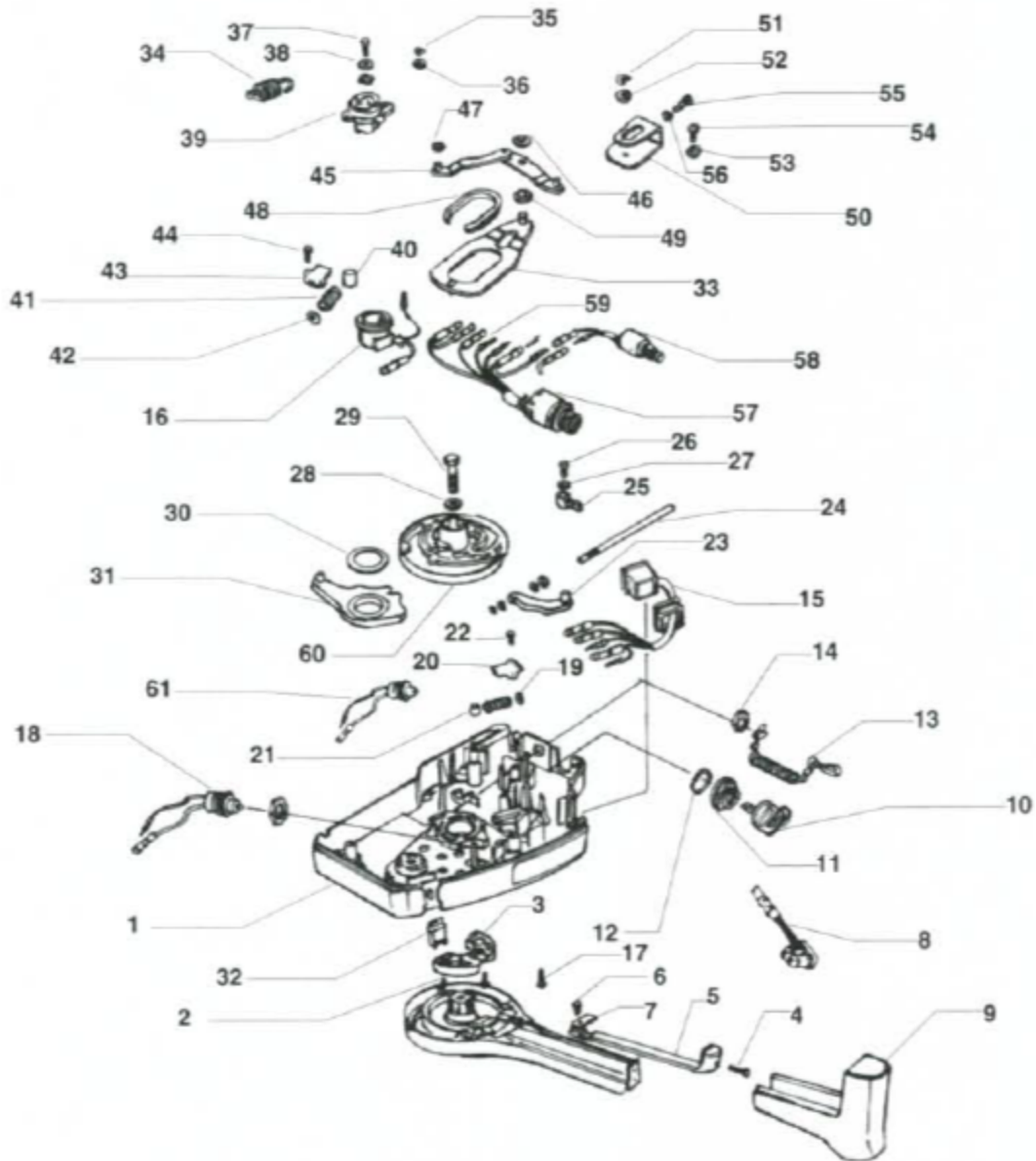


SIDE MOUNT STANDARD CONTROL

ALL MODELS (EXCLUDING MODELS BF9.9A AND BF15A)



- | | | | |
|------------------------------------|-------------------------|-------------------------------|----------------------------------|
| 1. Remote control housing | 16. Warning horn/buzzer | 31. Shift lever | 46. Washer |
| 2. Screw | 17. Screw | 32. Trim/tilt wire grommet | 47. Washer |
| 3. Neutral detent block | 18. Throttle switch | 33. Plate | 48. Collar |
| 4. Spring | 19. Washer | 34. Spring | 49. Washer |
| 5. Lock bar | 20. Plate | 35. E-clip | 50. Linkage connector |
| 6. Screw | 21. Pin | 36. Washer | 51. E-clip |
| 7. Plate | 22. Screw | 37. Screw | 52. Washer |
| 8. Trim/tilt switch | 23. Friction plate | 38. Washer | 53. Washer |
| 9. Grip | 24. Friction screw | 39. Neutral only throttle cam | 54. Screw |
| 10. Key switch | 25. Lever | 40. Pin | 55. Screw |
| 11. Key switch retaining nut | 26. Screw | 41. Spring | 56. Washer |
| 12. Wave washer | 27. Washer | 42. Washer | 57. Key switch |
| 13. Lanyard cord | 28. Washer | 43. Plate/retainer | 58. Emergency stop switch |
| 14. Emergency stop switch retainer | 29. Bolt | 44. Screw | 59. Electrical harness connector |
| 15. Warning light panel | 30. Bearing | 45. Linkage | 60. Control actuator wheel |
| | | | 61. Choke solenoid switch |