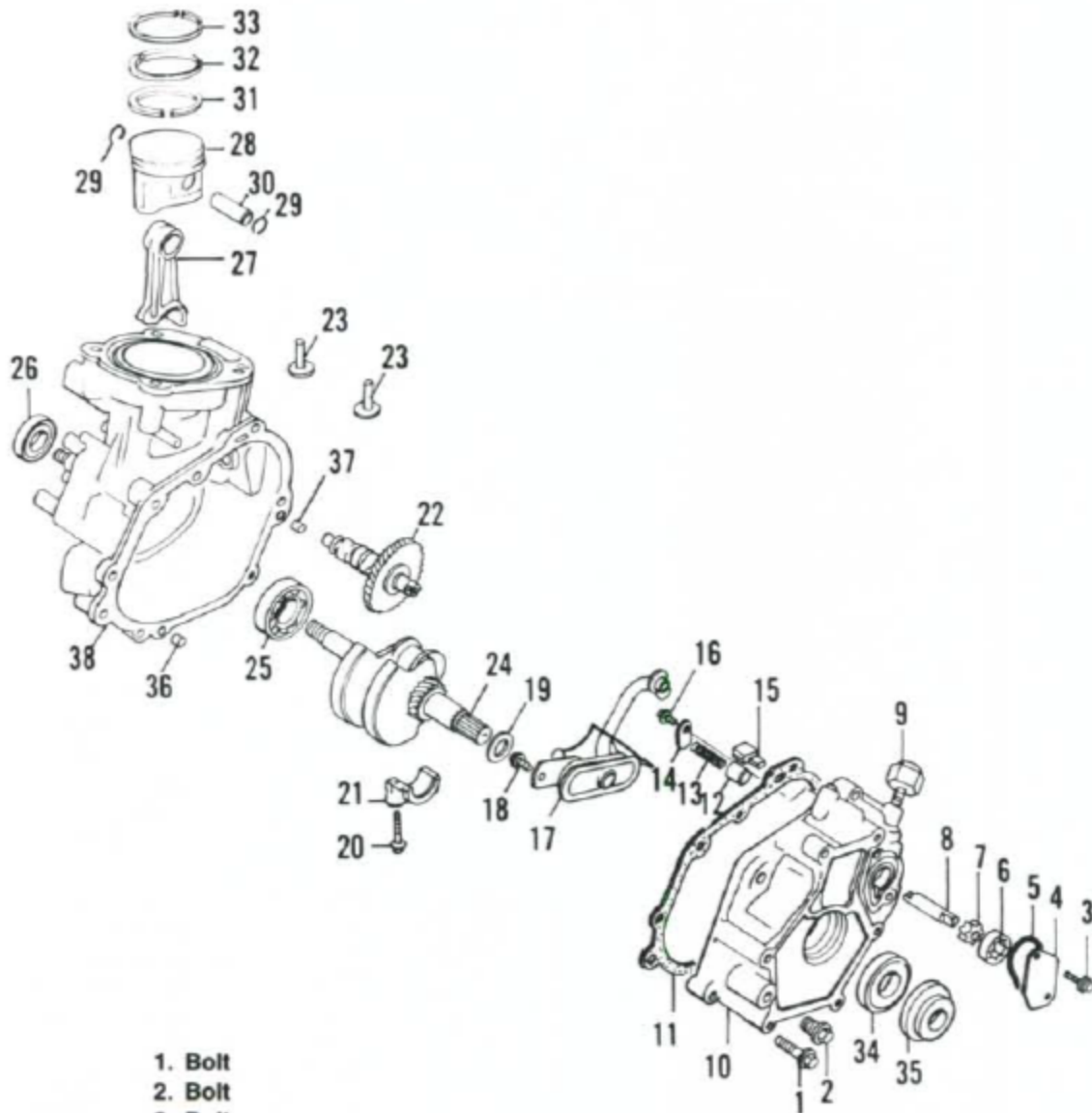


BASE ENGINE COMPONENTS (MODELS BF50 AND BF5A)



- | | |
|-------------------------------|-----------------------|
| 1. Bolt | 23. Lifter |
| 2. Bolt | 24. Crankshaft |
| 3. Bolt | 25. Ball bearing |
| 4. Pump cover | 26. Oil seal |
| 5. O-ring | 27. Connecting rod |
| 6. Outer rotor | 28. Piston |
| 7. Inner rotor | 29. Lockring |
| 8. Oil pump shaft | 30. Piston pin |
| 9. Oil pressure switch | 31. Oil ring (bottom) |
| 10. Crankcase | 32. Second ring |
| 11. Gasket | 33. Top ring |
| 12. Oil pressure relief valve | 34. Oil seal |
| 13. Relief valve spring | 35. Collar |
| 14. Retainer | 36. Alignment dowel |
| 15. Coupler | 37. Alignment dowel |
| 16. Screw | 38. Crankcase |
| 17. Oil pickup/screen | |
| 18. Bolt | |
| 19. Thrust washer | |
| 20. Rod bolt | |
| 21. Rod cap | |
| 22. Camshaft | |