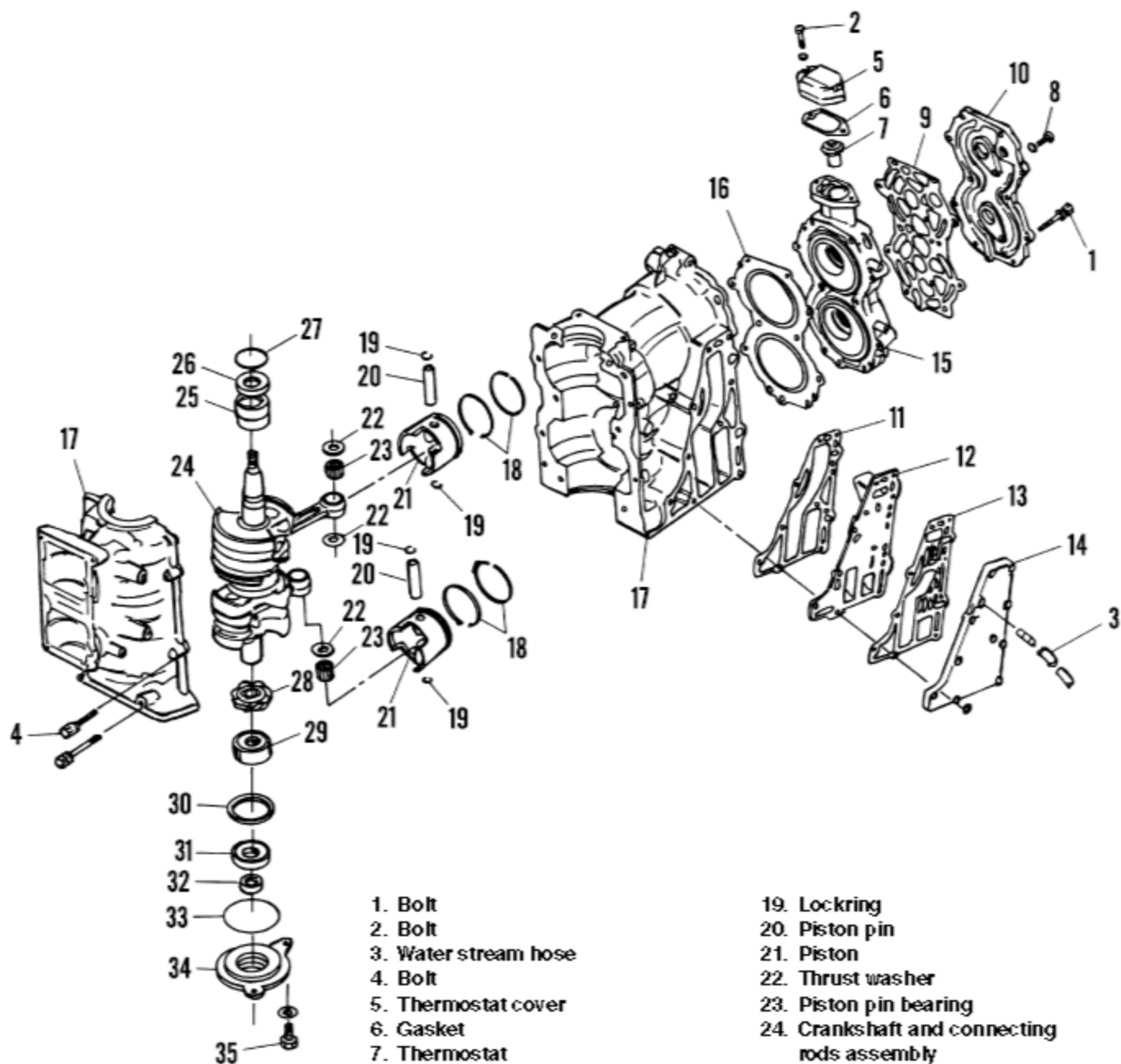


## POWER HEAD COMPONENTS (20 AND 25 HP TWO-CYLINDER MODELS)



- |                                    |   |
|------------------------------------|---|
| 1. Bolt                            | 19. Lockring                                |
| 2. Bolt                            | 20. Piston pin                              |
| 3. Water stream hose               | 21. Piston                                  |
| 4. Bolt                            | 22. Thrust washer                           |
| 5. Thermostat cover                | 23. Piston pin bearing                      |
| 6. Gasket                          | 24. Crankshaft and connecting rods assembly |
| 7. Thermostat                      | 25. Upper main bearing                      |
| 8. Bolt                            | 26. Crankshaft seal                         |
| 9. Gasket                          | 27. O-ring                                  |
| 10. Water jacket cover             | 28. Oil pump drive gear                     |
| 11. Gasket                         | 29. Lower main bearing                      |
| 12. Exhaust plate                  | 30. Spacer                                  |
| 13. Gasket                         | 31. Seal                                    |
| 14. Exhaust cover                  | 32. Seal                                    |
| 15. Cylinder head                  | 33. O-ring                                  |
| 16. Head gasket                    | 34. Lower seal housing and cover            |
| 17. Cylinder block/crankcase cover | 35. Bolt and washer                         |
| 18. Piston rings                   |   |