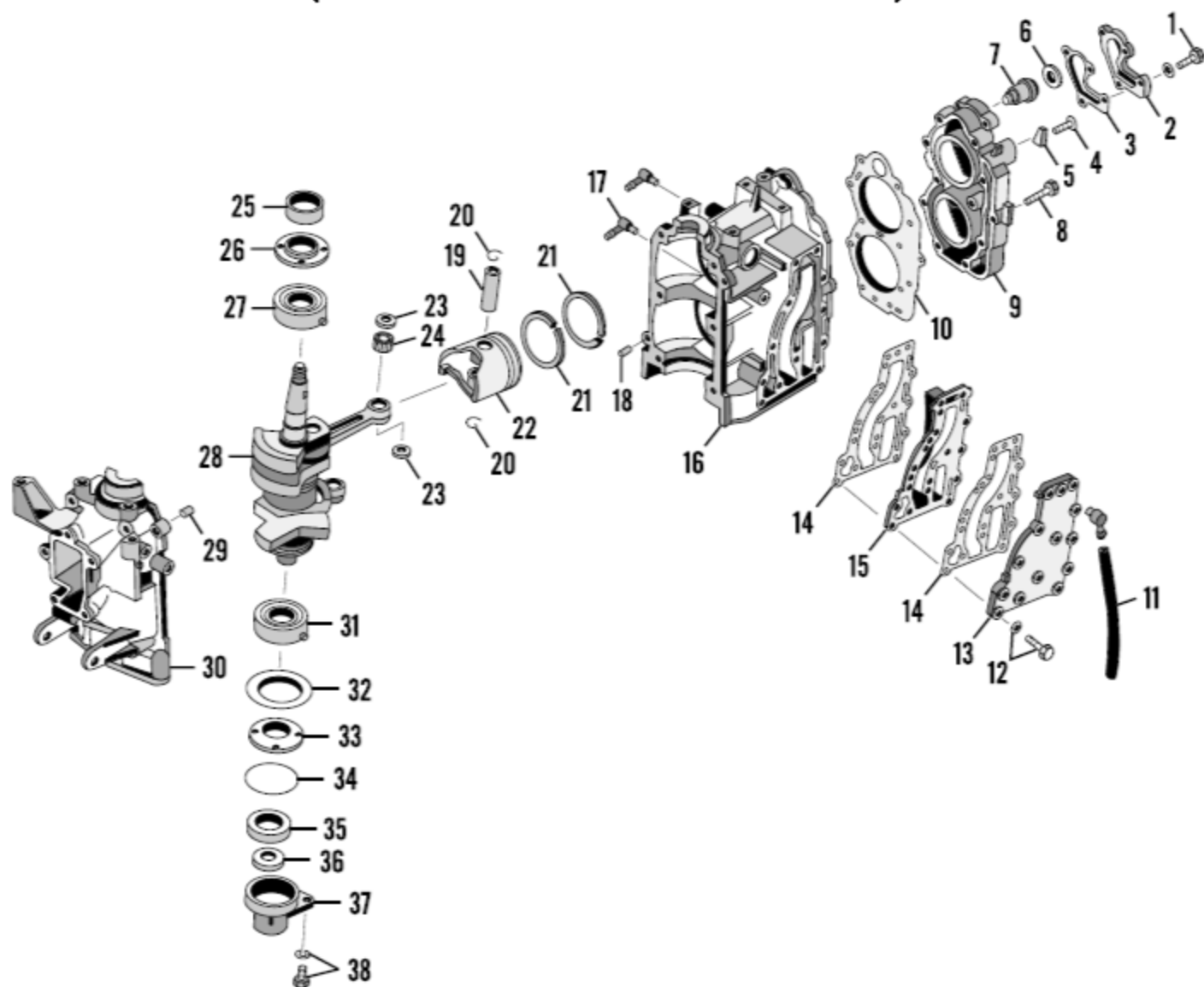


POWER HEAD COMPONENTS (9.9 AND 15 HP TWO-CYLINDER MODELS)



- | | | |
|-----------------------|----------------------------------|---|
| 1. Bolt and washer | 14. Gasket | 27. Upper main bearing |
| 2. Thermostat cover | 15. Exhaust plate | 28. Crankshaft and connecting rods assembly |
| 3. Gasket | 16. Cylinder block | 29. Locating pin |
| 4. Screw | 17. Fittings | 30. Crankcase cover |
| 5. Anode | 18. Locating pin | 31. Lower main bearing |
| 6. Washer | 19. Piston pin | 32. Spacer |
| 7. Thermostat | 20. Lockring | 33. Plate |
| 8. Bolt | 21. Piston rings | 34. O-ring |
| 9. Cylinder head | 22. Piston | 35. Crankshaft seal |
| 10. Head gasket | 23. Thrust washer | 36. Drive shaft seal |
| 11. Water stream hose | 24. Piston pin bearing | 37. Lower seal housing and cover |
| 12. Bolt and washer | 25. Crankshaft seal | 38. Bolt and washer |
| 13. Exhaust cover | 26. Upper seal housing and cover | |