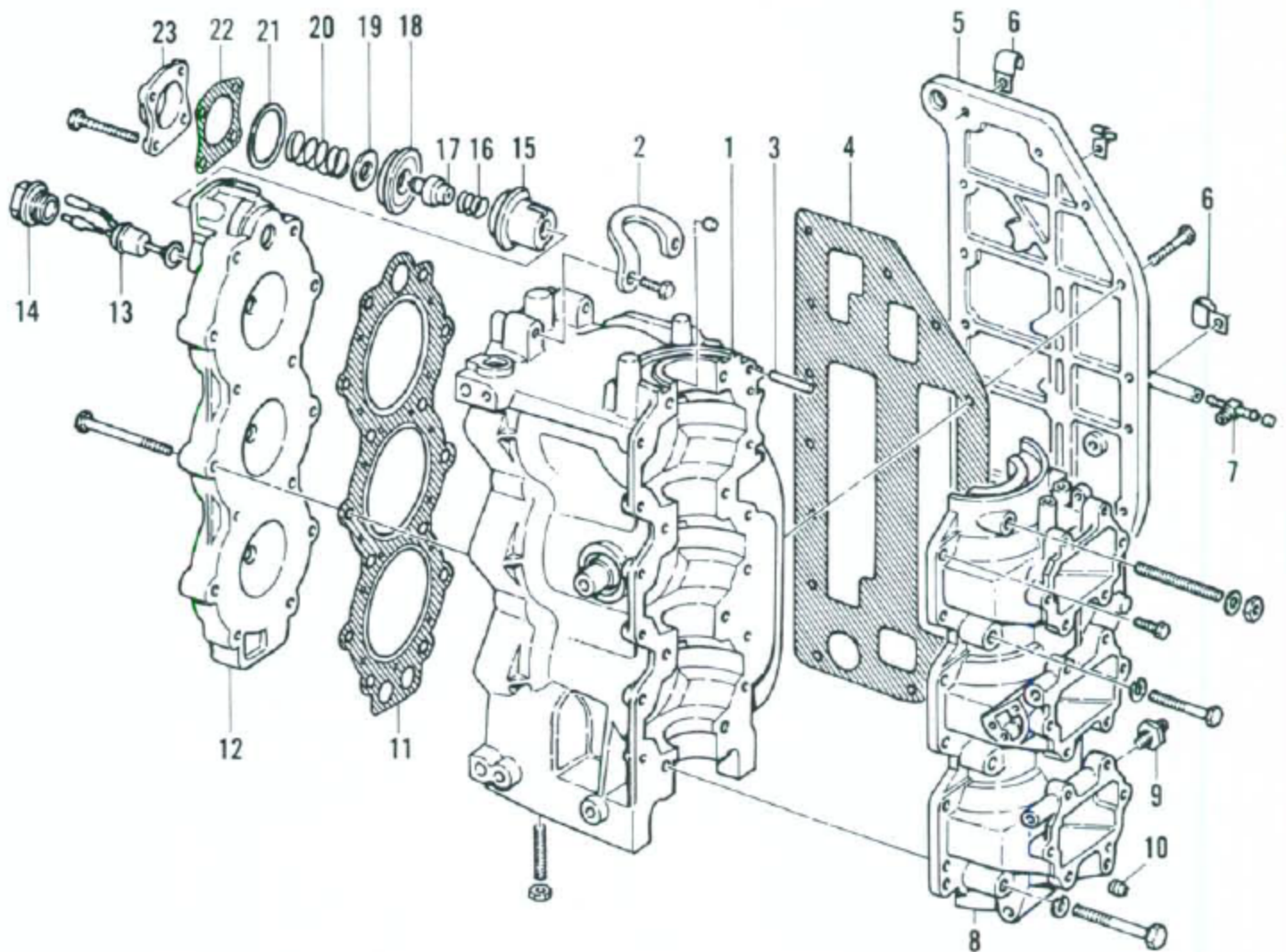


CYLINDER BLOCK, CRANKCASE COVER AND RELATED COMPONENTS (60-70 HP)



- | | |
|--------------------|---------------------------------|
| 1. Cylinder block | 13. Temperature switch |
| 2. Lifting eye | 14. Temperature switch retainer |
| 3. Taper pin | 15. Thermostat housing |
| 4. Gasket | 16. Spring |
| 5. Exhaust cover | 17. Thermostat |
| 6. Clamp | 18. Diaphragm |
| 7. Fitting | 19. Cup |
| 8. Crankcase cover | 20. Spring |
| 9. Pulse limiter | 21. Washer |
| 10. Plug | 22. Gasket |
| 11. Gasket | 23. Thermostat cover |
| 12. Cylinder head | |