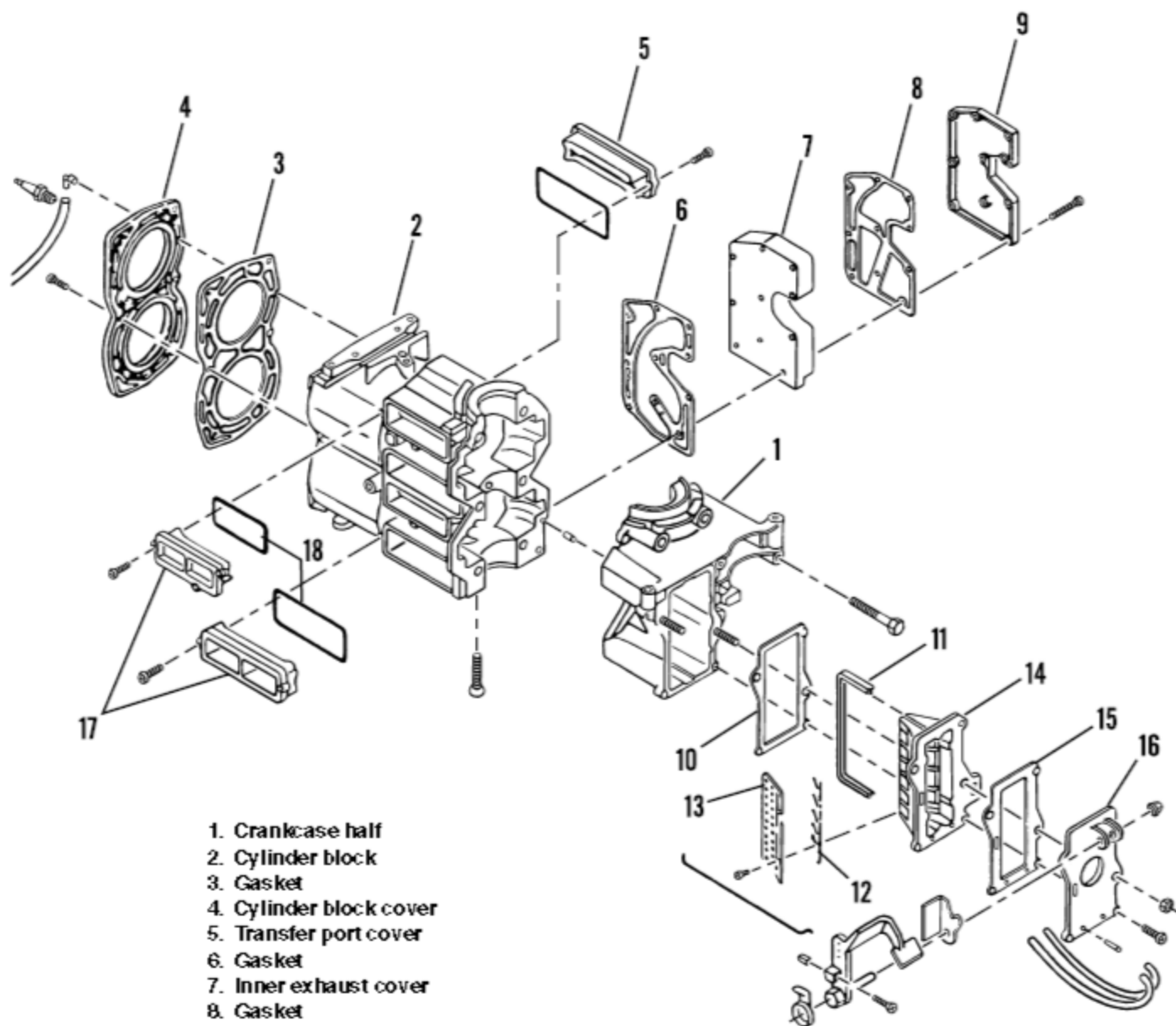


## POWER HEAD COMPONENTS (20-25 HP AND 20 JET)



1. Crankcase half
2. Cylinder block
3. Gasket
4. Cylinder block cover
5. Transfer port cover
6. Gasket
7. Inner exhaust cover
8. Gasket
9. Outer exhaust cover
10. Gasket
11. Reed valve seal\*
12. Reed valves
13. Reed stop
14. Reed block
15. Gasket
16. Adapter plate
17. Intake covers
18. O-ring gasket

\*Not used on all models.