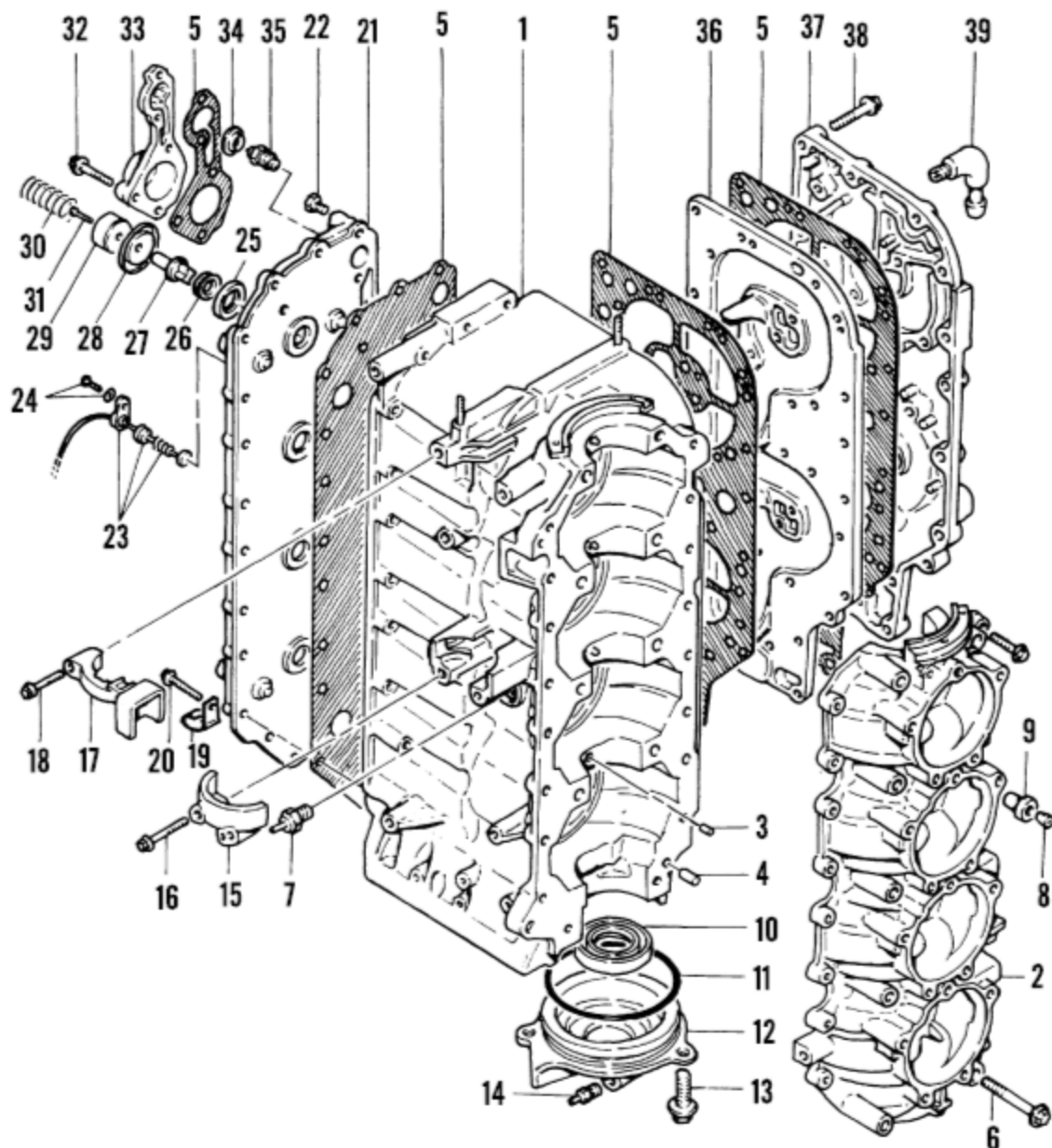


**CYLINDER BLOCK (65 JET AND 75-125 HP
[EXCEPT 105 JET AND 115 HP OPTIMAX] MODELS)
(FOUR-CYLINDER SHOWN)**



- | | | |
|--------------------------------------|-------------------------------|---|
| 1. Cylinder block | 14. Check valve | 28. Diaphragm |
| 2. Crankcase cover | 15. Lower starter bracket | 29. Cup |
| 3. Bearing locating dowel | 16. Bolt | 30. Spring |
| 4. Crankcase cover dowel | 17. Upper starter bracket | 31. Screw |
| 5. Gaskets | 18. Bolt | 32. Screw |
| 6. Crankcase cover bolts | 19. Clamp | 33. Thermostat cover |
| 7. Accelerator pump discharge nozzle | 20. Screw | 34. Grommet |
| 8. Fuel bleed check valve | 21. Cylinder block cover | 35. Thermostat |
| 9. Fuel bleed check valve carrier | 22. Brass pipe plug | 36. Exhaust manifold |
| 10. Crankshaft lower seal | 23. Engine temperature switch | 37. Exhaust cover |
| 11. O-ring | 24. Screw and washer | 38. Bolt |
| 12. Lower end cap | 25. Carrier | 39. Water discharge (tell-tale) fitting |
| 13. Bolt | 26. Grommet | |
| | 27. Poppet valve | |