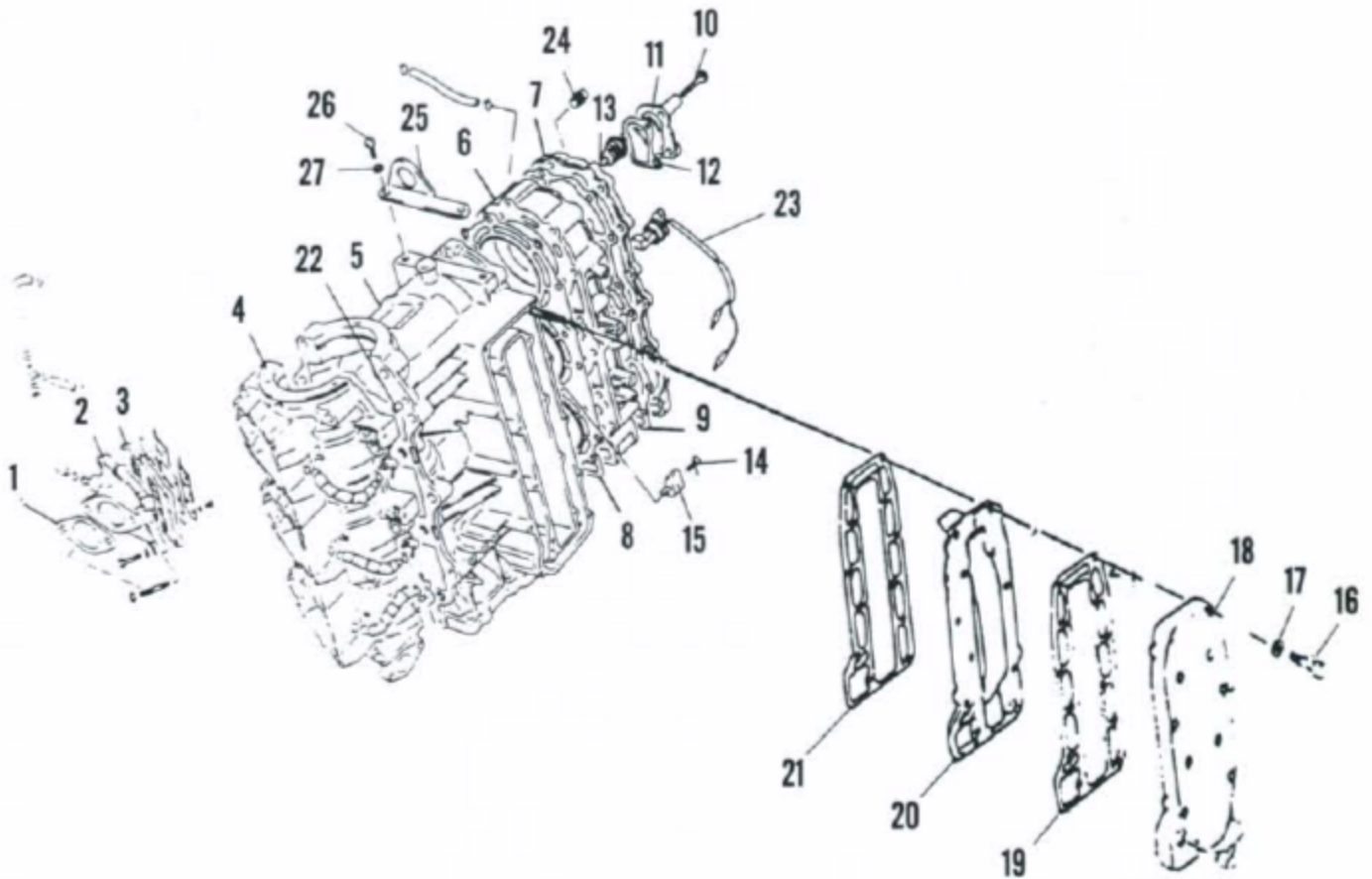


## CYLINDER BLOCK, CYLINDER HEAD AND WATER JACKET (MODELS DT55 AND DT65)



- |                        |                        |
|------------------------|------------------------|
| 1. Carburetor gasket   | 15. Anode              |
| 2. Intake manifold     | 16. Bolt               |
| 3. Reed plate          | 17. Washer             |
| 4. Crankcase cover     | 18. Water jacket cover |
| 5. Cylinder block      | 19. Gasket             |
| 6. Cylinder head       | 20. Exhaust cover      |
| 7. Cylinder head cover | 21. Gasket             |
| 8. Head gasket         | 22. Dowel pin          |
| 9. Gasket              | 23. Temperature sensor |
| 10. Bolt               | 24. Plug               |
| 11. Thermostat cover   | 25. Lifting hook       |
| 12. Gasket             | 26. Bolt               |
| 13. Thermostat         | 27. Washer             |
| 14. Screw              |                        |